



AUDIO

Beschallung großer Saal:

- Front: pro Seite 1x RCF 8001 AS 18" Sub / RCF NX-L24A Top
- Delay: pro Seite 1x Yamaha DXR10
- Rang: pro Seite 1x RCF ART 500 15"/2"
- Monitor: 4x dbTechnologies FMX12

Mobile Beschallungsanlage

- 2x BOSE L1 MKII inkl. 4x B1 Bass

Pult / Stagebox:

- Allen&Heath SQ 5
- AR 2412
- Multicore (2x CAT6; 1x DMX; 1x Schuko)

Mikrofone:

- Funkstrecken (fester Standort im Regieraum)
 - 12 x Sennheiser EW 300
 - 4x SKM300 / e935
 - 8x SK 300 / HSP 4 Headset
- Sonstige
 - Shure SM 58
 - Beyer M201
 - Sennheiser 441
 - ...

Strom

Bühne

- 2x CEE 16 Amp
- 2x CEE 32 Amp

Galerie

- 1x CEE 32 Amp

LICHT

Siehe Lichtplan (1 DMX Universum!!!)

- 24 Dimmerkreise (fest vergeben)
 - 6 1KW Profilscheinwerfer
 - 2 1KW Stufenlinsen
 - 8 2KW Stufenlinsen
- 8 ETC Colour Source Spot LED
- 6 ETC Colour Source Fresnel LED
- 6 Stairville novaWash LED
- 2 Martin Rush MH1+ LED
- 4 CAMEO Auro Spot Z300 LED
- 10 Stairville HL-x9 QuadFlood 8c LED
- 6 CAMEO FlatParPro 7 LED (Vorhangbeleuchtung)
- 4 CAMEO FlarPARPro 7xs LED (Vorhangbeleuchtung)

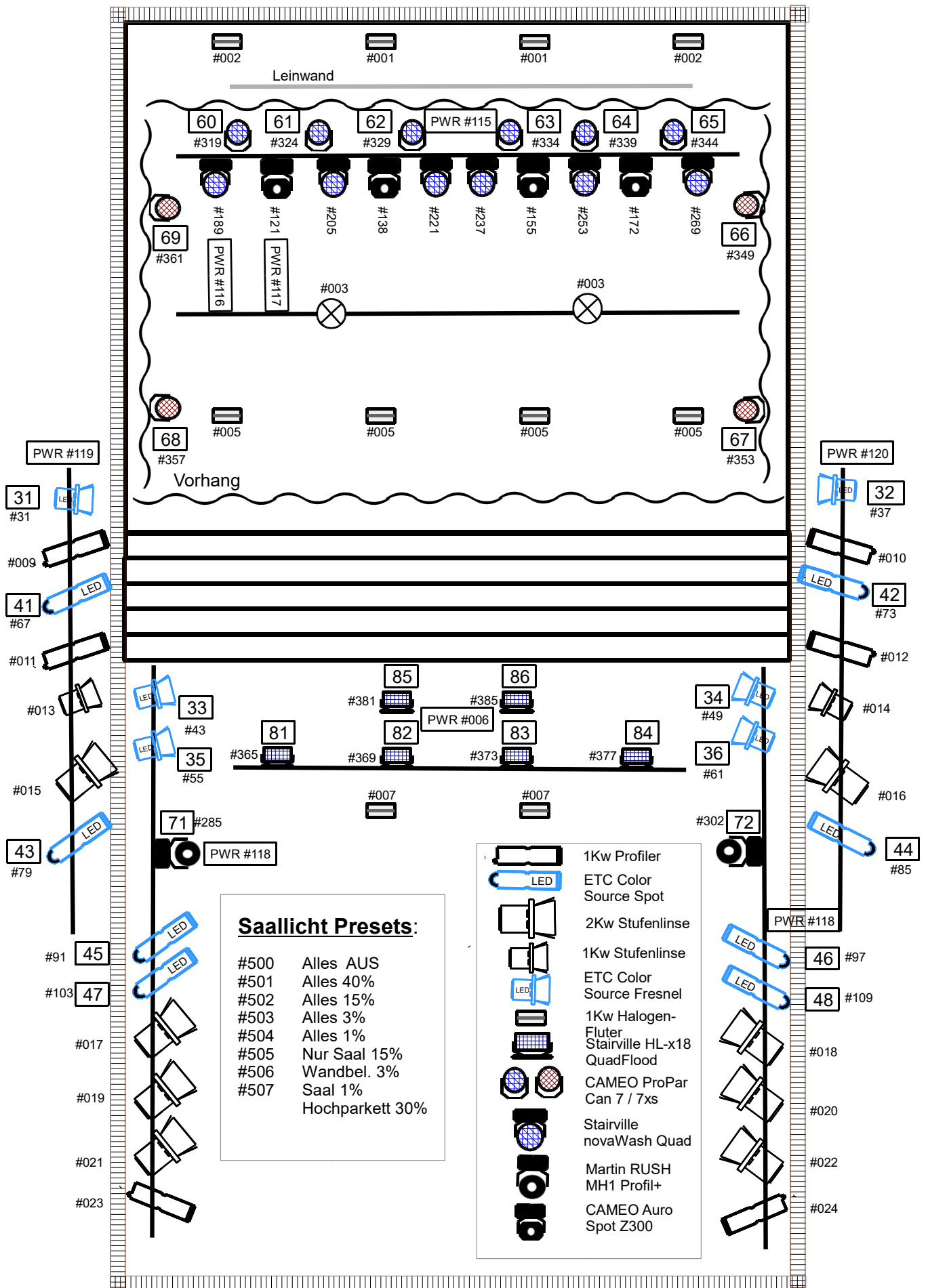
Pult:

- Zero88 FLX + Wing

VIDEO

Beamer ect.

- **Digital Projection E-Vision 13000**; WUXGA; weiß und rot Laser (12000 AnsiLumen)
- Leinwand 6 x 4 Meter
- HDMI Anschluss möglich: 1x Bühne, 1x Regieraum



Kreis-Belegung																
Kreis	#Dmx	Typ	Mode	Verwendung	HotPatch	Kreis	#Dmx	Typ	Mode	Verwendung	Kreis	#Dmx	Typ	Mode	Verwendung	HotPatch
1	1	Dimmer	8bit	2x 1KW Fluter	fix	31	31	ETC Color Source Deep Blue	dir. 6 Ch.	Fresnel	71	285	MARTIN Rush MH1 Profile+	16bit		
2	2	Dimmer	8bit	2x 1KW Fluter	fix	32	37	ETC Color Source Deep Blue	dir. 6 Ch.	Fresnel	72	302	MARTIN Rush MH1 Profile+	16bit		
3	3	Dimmer	8bit	2x Downlights	fix	33	43	ETC Color Source Deep Blue	dir. 6 Ch.	Fresnel	73	121	CAMEO Auro Spot Z300	17 Ch. Mode		
4	4	Dimmer	8bit		fix	34	49	ETC Color Source Deep Blue	dir. 6 Ch.	Fresnel	74	138	CAMEO Auro Spot Z300	17 Ch. Mode		
5	5	Dimmer	8bit	4x 500W Fluter	fix	35	55	ETC Color Source Deep Blue	dir. 6 Ch.	Fresnel	75	155	CAMEO Auro Spot Z300	17 Ch. Mode		
6	6	Dimmer	8bit	PWR für LEDs	fix	36	61	ETC Color Source Deep Blue	dir. 6 Ch.	Fresnel	76	172	CAMEO Auro Spot Z300	17 Ch. Mode		
7	7	Dimmer	8bit	2x 1KW Fluter	fix											
8	8	Dimmer	8bit	DEFEKT	fix											
9	9	Dimmer	8bit	1KW Profiler	X 1.5	41	67	ETC Color Source Deep Blue	dir. 6 Ch.	Profiler 25°-50°	81	365	Stairville HL-x18 QuadFlood QCL	4 Ch. Mode	Front Wash RGBW	
10	10	Dimmer	8bit	1KW Profiler	X 2.5	42	73	ETC Color Source Deep Blue	dir. 6 Ch.	Profiler 25°-50°	82	369	Stairville HL-x18 QuadFlood QCL	4 Ch. Mode	Front Wash RGBW	
11	11	Dimmer	8bit	1KW Profiler	X 1.19	43	79	ETC Color Source Deep Blue	dir. 6 Ch.	Profiler 15°-30°	83	373	Stairville HL-x18 QuadFlood QCL	4 Ch. Mode	Front Wash RGBW	
12	12	Dimmer	8bit	1KW Profiler	X 2.19	44	85	ETC Color Source Deep Blue	dir. 6 Ch.	Profiler 15°-30°	84	377	Stairville HL-x18 QuadFlood QCL	4 Ch. Mode	Front Wash RGBW	
13	13	Dimmer	8bit	2KW Stufenlinse	X 1.23	45	91	ETC Color Source Deep Blue	dir. 6 Ch.	Profiler 15°-30°	85	381	Stairville HL-x18 QuadFlood QCL	4 Ch. Mode	Front Wash RGBW	
14	14	Dimmer	8bit	2KW Stufenlinse	X 2.23	46	97	ETC Color Source Deep Blue	dir. 6 Ch.	Profiler 15°-30°	86	385	Stairville HL-x18 QuadFlood QCL	4 Ch. Mode	Front Wash RGBW	
15	15	Dimmer	8bit	2KW Stufenlinse	X 1.24	47	103	ETC Color Source Deep Blue	dir. 6 Ch.	Profiler 15°-30°						
16	16	Dimmer	8bit	2KW Stufenlinse	X 2.24	48	109	ETC Color Source Deep Blue	dir. 6 Ch.	Profiler 15°-30°						
17	17	Dimmer	8bit	2KW Stufenlinse	X 1.16						91	389	Stairville HL-x18 QuadFlood QCL	4 Ch. Mode	Mobil	
18	18	Dimmer	8bit	2KW Stufenlinse	X 2.16						92	393	Stairville HL-x18 QuadFlood QCL	4 Ch. Mode	Mobil	
19	19	Dimmer	8bit	2KW Stufenlinse	X 1.19	51	189	Stairville novaWash Quad	16bit		93	397	Stairville HL-x18 QuadFlood QCL	4 Ch. Mode	Mobil	
20	20	Dimmer	8bit	2KW Stufenlinse	X 2.19	52	205	Stairville novaWash Quad	16bit		94	401	Stairville HL-x18 QuadFlood QCL	4 Ch. Mode	Mobil	
21	21	Dimmer	8bit	2KW Stufenlinse	X 1.20	53	221	Stairville novaWash Quad	16bit		95	405	Stairville HL-x18 QuadFlood QCL	4 Ch. Mode	Mobil	
22	22	Dimmer	8bit	2KW Stufenlinse	X 2.20	54	237	Stairville novaWash Quad	16bit		96	409	Stairville HL-x18 QuadFlood QCL	4 Ch. Mode	Mobil	
23	23	Dimmer	8bit	1KW Profiler	X 1.22	55	253	Stairville novaWash Quad	16bit							
24	24	Dimmer	8bit	1KW Profiler	X 2.22	56	269	Stairville novaWash Quad	16bit		99	413	CAMEO Hazer			
25	25	Dim/Switch	8bit		X 3.25											
26	26	Dim/Switch	8bit		X 3.26											
27	27	Dim/Switch	8bit		X 3.27	60	319	CAMEO Flat Pro Par Can 7	5 Ch. Mode	Backdrop RGBWA	Freie DMX Adressen: #415 - #499 (79)					
28	28	Dim/Switch	8bit		X 3.28	61	324	CAMEO Flat Pro Par Can 7	5 Ch. Mode	Backdrop RGBWA						
29	29	Dim/Switch	8bit			62	329	CAMEO Flat Pro Par Can 7	5 Ch. Mode	Backdrop RGBWA						
30	30	Dim/Switch	8bit			63	334	CAMEO Flat Pro Par Can 7	5 Ch. Mode	Backdrop RGBWA						
						64	339	CAMEO Flat Pro Par Can 7	5 Ch. Mode	Backdrop RGBWA	101	115	Switch 10Amp.	Switch	Flat PARs LED	X 1.2
						65	344	CAMEO Flat Pro Par Can 7	5 Ch. Mode	Backdrop RGBWA	102	116	Switch 10Amp.	Switch	nova Wash LED	X 1.1
						66	349	CAMEO Flat Pro Par Can 7xs	4 Ch. Mode	Backdrop RGBW	103	117	Switch 10Amp.	Switch	Auro Spot LED	X 2.2
						67	353	CAMEO Flat Pro Par Can 7xs	4 Ch. Mode	Backdrop RGBW	104	118	Switch 10Amp.	Switch	Rush MH1+ LED	X 1.10 / X 2.10
						68	357	CAMEO Flat Pro Par Can 7xs	4 Ch. Mode	Backdrop RGBW	105	119	Switch 10Amp.	Switch	ETC LED Links	X 1.4 / X 1.26
						69	361	CAMEO Flat Pro Par Can 7xs	4 Ch. Mode	Backdrop RGBW	106	120	Switch 10Amp.	Switch	ETC LED rechts	X 2.3 / X 2.26